

員工狀況
Staff Position

截至2024年3月31日，全職員工的總人數為6,711人，較去年同期增加3.0%。當中社會工作服務部和教育服務部分別佔整體全職員工59.0%及27.2%，而中央與支援服務、地區事務服務及庶務服務則合共佔整體全職員工2.8%。

由2023年4月至2024年3月期間，全職員工的流失率為20.7%，較去年同期減少3.7%，當中以醫療服務部員工的流失率為最高。

截至2024年3月31日，兼職員工的總人數為2,091人，較去年同期增加9.7%。

圖一顯示全職和兼職員工的人數與全職員工流失人數在各服務單位的分佈。

圖二及圖三分別按性別和服務單位描述於明愛服務長達10年或以上的員工。女性員工佔整體長期服務員工人數約71.7%，與去年相約。

The total number of full-time staff as of 31 March 2024 was 6,711 which was 3.0% higher than that of last year. The number of full-time staff for Social Work Services Division and Education Services Division accounted for respectively 59.0% and 27.2% of the population while staff of Central & Supporting Services and Local Services & Janitorial Service constituted 2.8% of the population.

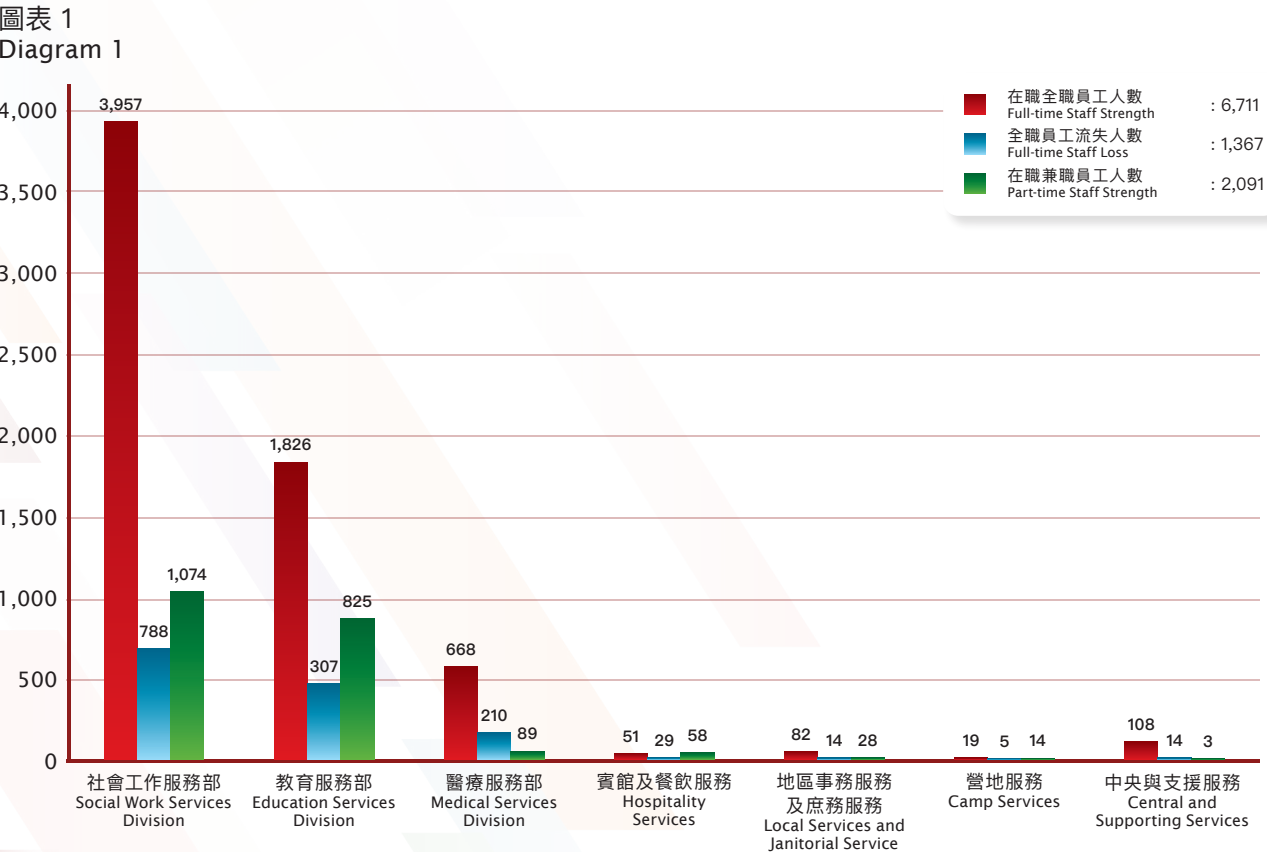
The turnover rate of full-time staff for the period from April 2023 to March 2024 was 20.7%, representing a decrease of 3.7% as compared to the same period of 2022 / 2023. The staff turnover rate of Medical Services Division was the highest.

The total number of part-time staff was 2,091 as of 31 March 2024, which represented an increase of 9.7% as compared with that of 2023.

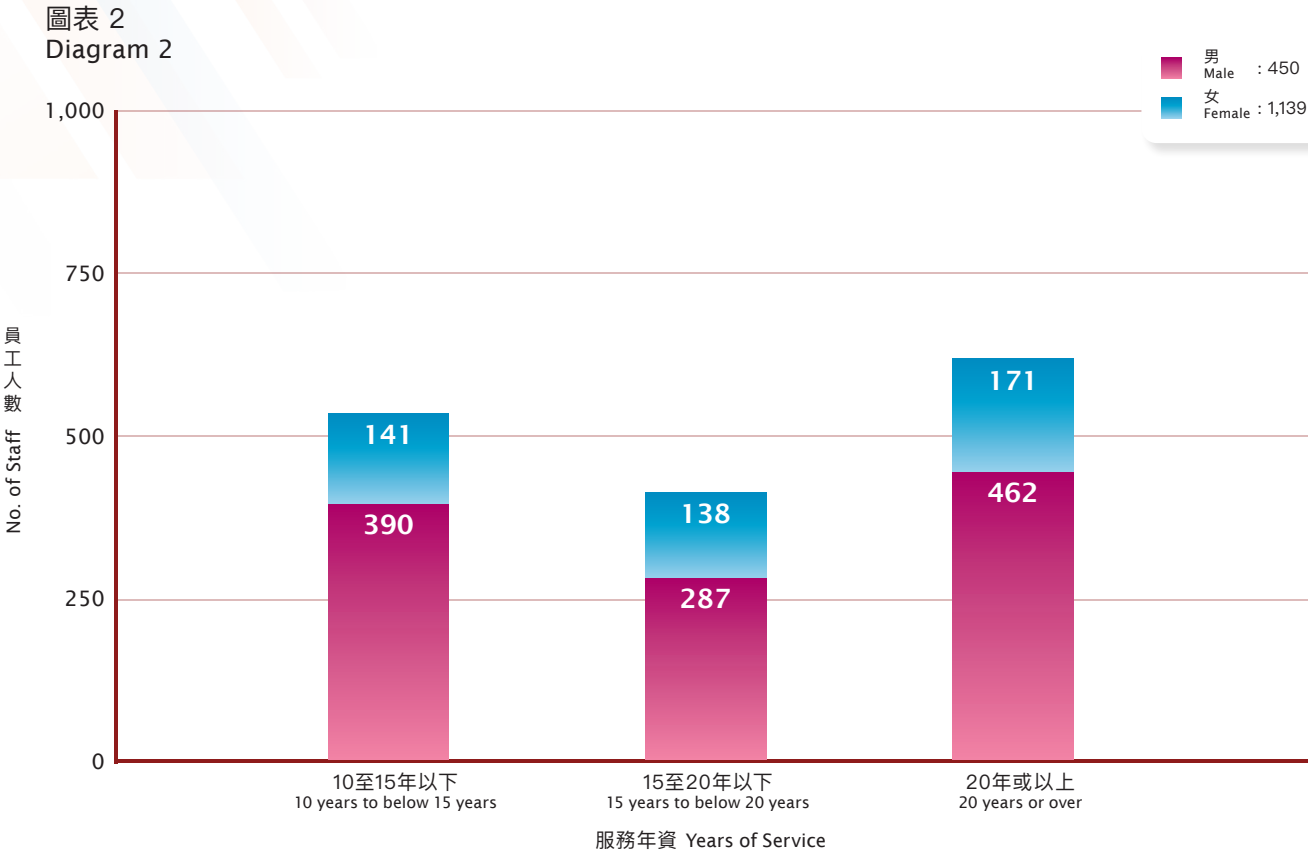
Diagram 1 shows the distribution of full-time and part-time staff as well as the manpower loss of full-time staff among various services.

Diagram 2 and 3 delineate the position of staff having served in Caritas for 10 years or more by gender and by services respectively. The number of female staff constituted about 71.7% of the long-serving staff members, which was similar to that of last year.

截至2024年3月31日 在職員工人數及2023 / 2024年度全職員工的流失人數
Staff Strength as at 31 March 2024 and Full-time Staff Turnover in 2023 / 2024



截至2024年3月31日長期服務全職員工的人數及狀況
Position of Long-serving Full-time Staff as at 31 March 2024



於2024年3月31日長期服務全職員工人數與狀況
Long-serving Full-time Staff as at 31 March 2024

